



CONNECTIONS
Kidsville

The Nation's Favorite Fun Family Newspaper
 Kidsville News! Brainworks Worksheet
 April Enrichment Activities
 Grades K-2

Students: After reading "Connections," label the parts of the flower using the terms provided below. The stamen and the pistil are already labeled. After identifying the remaining parts, color the picture to resemble your favorite flower.

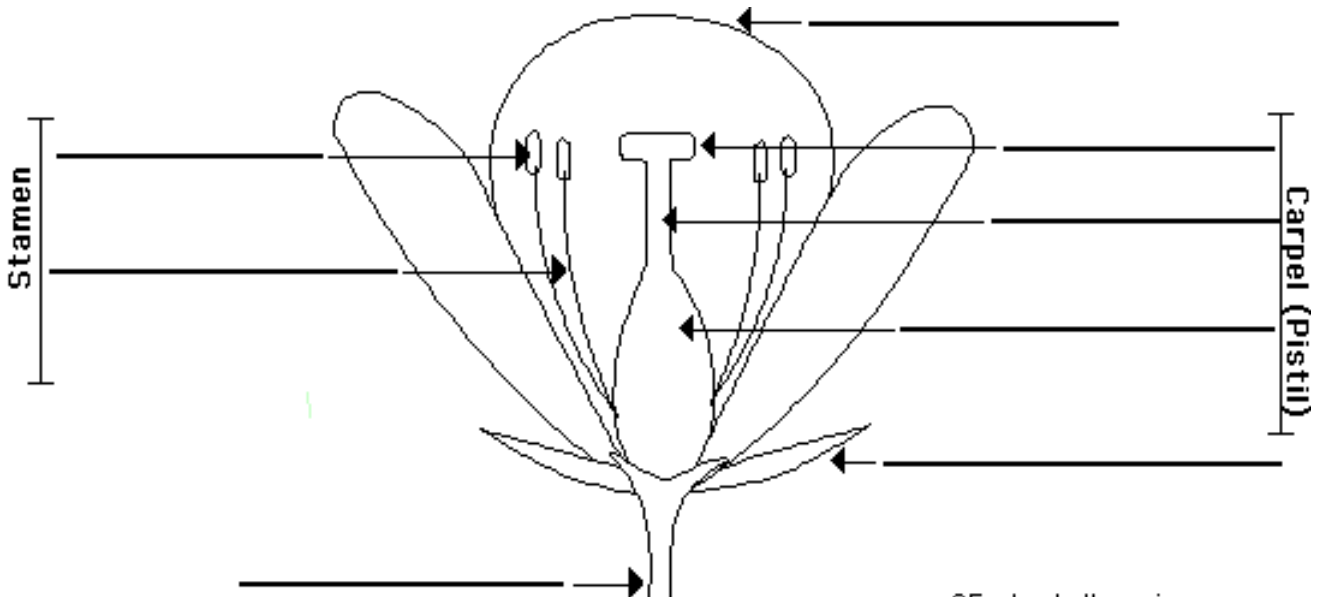
Parts of a Flower

anther
filament

ovary
petal

sepal
stem

stigma
style



Around the

WORLD



The Nation's Favorite Fun Family Newspaper
Kidsville News! Brainworks Worksheet
April Enrichment Activities
Grades K-2

Students: After reading "Around the World," draw and color pictures of the flowers and plants listed in the article. As these images are not provided in *Kidsville News!*, you will need creativity and a sense of humor to create pictures of these freaky flowers from around the world. In each box, label your drawing with the plant name and world location.



The Nation's Favorite Fun Family Newspaper
Kidsville News! Brainworks Worksheet
April Enrichment Activities
Grades K-2



Students: After reading "Wildville," fill in the blanks with facts found in the article about carnivorous plants. The first letter of each answer is provided.

1. Carnivorous means to eat **_m_** from animals for survival. Carnivorous plants are also called **i** plants.
2. The **_v_** **_f_** has a two-trigger system that allows it to catch moving prey.
3. Traps can be **_a_** or **_p_**. These terms mean the traps are moving or non-moving.
4. The Sundew Drosera is a flypaper plant with **_s_**, sticky tentacles that move after being **_t_** by an insect.
5. Carnivorous plants are typically herbs without **_w_** or **_b_**.
6. These plants grow in places where the **_s_** is thin or **_l_** in nutrients and is rocky or **_a_**. They can grow on water or **_l_**.
7. Charles Darwin wrote the first well-known book on the plants in the year _____.
8. The carnivorous plants that catch prey but not eat it may have a symbiotic or **_b_** relationship another organism that feeds on the **_p_**.
9. The triphyophyllum is a liana, a tropical **_c_** that uses sticky **_l_** to catch prey.
10. Carnivorous plants must attract, kill and **_d_** their prey that consists of small insects. There are 630 plant **_s_** in five carnivorous plant families.



The Nation's Favorite Fun Family Newspaper
 Kidsville News! Brainworks Worksheet
 April Enrichment Activities
 Grades K-2

Answer Key



Students: After reading "Connections," label the parts of the flower using the terms provided below. The stamen and the pistil are already labeled. After identifying the remaining parts, color the picture to resemble your favorite flower.

Parents/Teachers: Answers are below.

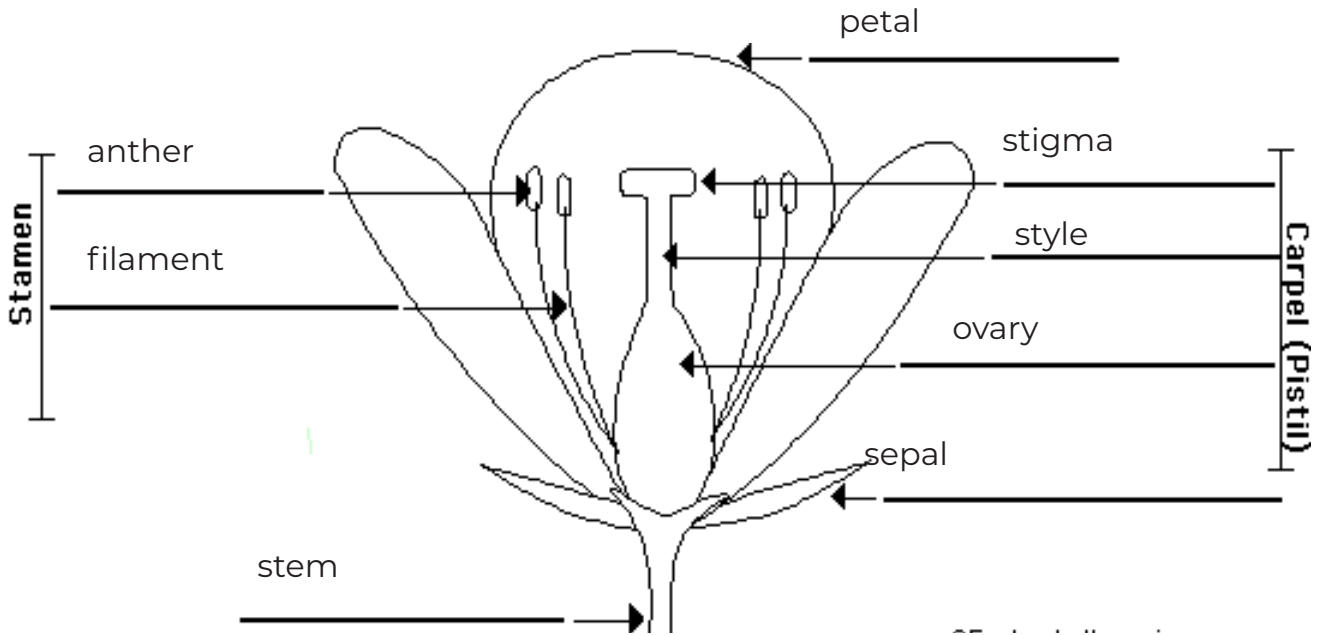
Parts of a Flower

anther
filament

ovary
petal

sepal
stem

stigma
style





The Nation's Favorite Fun Family Newspaper
Kidsville News! Brainworks Worksheet
April Enrichment Activities
Grades K-2



Answer Key

Students: After reading “Around the World,” draw and color pictures of the flowers and plants listed in the article. As these images are not provided in *Kidsville News!*, you will need creativity and a sense of humor to create pictures of these freaky flowers from around the world. In each box, label your drawing with the plant name and world location.

Parents/Teachers: Drawings will vary. Check to see that all six from the article are represented and labeled.

Monkey Orchid, Ecuador and Peru

Happy Alien flowers, Antarctica

Bat Plant, Southern China

Giant Pelican Flower, Brazil and Costa Rica

Corpse Flower, Indonesia

Flying Duck Orchid, Australia



The Nation's Favorite Fun Family Newspaper
Kidsville News! Brainworks Worksheet
April Enrichment Activities
Grades K-2

Answer Key



Students: After reading “Wildville,” fill in the blanks with facts found in the article about carnivorous plants. The first letter of each answer is provided.
Parents/Teachers: Answers are below.

1. Carnivorous means to eat meat from animals for survival. Carnivorous plants are also called insectivorous plants.
2. The Venus flytrap has a two-trigger system that allows it to catch moving prey.
3. Traps can be active or passive. These terms mean the traps are moving or non-moving.
4. The Sundew Drosera is a flypaper plant with sensitive, sticky tentacles that move after being touched by an insect.
5. Carnivorous plants are typically herbs without wood or bark.
6. These plants grow in places where the soil is thin or low in nutrients and is rocky or acidic. They can grow on water or land.
7. Charles Darwin wrote the first well-known book on the plants in the year 1875.
8. The carnivorous plants that catch prey but not eat it may have a symbiotic or beneficial relationship another organism that feeds on the prey.
9. The triphyophyllum is a liana, a tropical climber that uses sticky leaves to catch prey.
10. Carnivorous plants must attract, kill and digest their prey that consists of small insects. There are 630 plant species in five carnivorous plant families.